

PANTA REI

MONACHUS 70 FLY

PANTA REI is a standout Croatian-built luxury yacht, delivered in May 2022. She debuted on the world stage at the prestigious Venice Boat Show later that same month, immediately capturing the attention of the global yachting community.



TOUCH ADRIATIC

PANTA REI - MONACHUS 70 FLY

INFORMATION

LOA

21.10 m (69' 3")

BEAM

5.85 m (19' 2")

DRAFT

1.3m (4' 5")

BUILT

2022

GUESTS

8

CREW

2

NAVAL ARCHITECT

Srdan Dakovic

HULL MATERIAL

GRP

HULL CONFIGURATION

Planing hull

SUPERSTRUCTURE

Flybridge



TOUCH ADRIATIC

PANTA REI - MONACHUS 70 FLY

KEY FEATURES

1

The first Croatian-built luxury yacht, setting a new benchmark in regional craftsmanship

2

A refined blend of elegance and sporty performance

3

Exceptional onboard comfort across all living spaces

4

Spacious design paired with a deep-V hull for superior stability and smooth cruising



TOUCH ADRIATIC

OVERVIEW

M/Y PANTA REI is Croatia's first luxury motor yacht, introduced to the market in 2022 following her debut at the Venice Boat Show. An impressive and elegant vessel, she blends a sporty spirit with a striking design that leaves a lasting impression. Every detail is crafted to enhance the onboard experience—from the expansive flybridge, where the breeze heightens the sense of freedom, to the refined spaces designed for relaxation and enjoyment.

Engineered for superior performance, she offers outstanding navigability with a focus on safety and precision, meeting the highest CE Category A standards. Powerful propulsion is complemented by the Volvo IPS system with Skyhook, while the automatic Interceptor stabilizers ensure optimal balance, smooth handling, and effortless maneuvering—even during docking.

Her fully personalized interiors exude sophistication, with beautifully appointed cabins, each featuring a private en-suite bathroom to provide maximum comfort and privacy throughout the journey.

M/Y PANTA REI delivers exceptional luxury and comfort, offering a refined, safe, and effortlessly seamless cruising experience in every respect.



PANTA REI - MONACHUS 70 FLY

GALLERY



Aft cockpit alfresco

TOUCH ADRIATIC

PANTA REI - MONACHUS 70 FLY

GALLERY



Alfresco table back view

TOUCH ADRIATIC

PANTA REI - MONACHUS 70 FLY

GALLERY



View from the main deck through the salon

TOUCH ADRIATIC

PANTA REI - MONACHUS 70 FLY

GALLERY



Salon view

TOUCH ADRIATIC

PANTA REI - MONACHUS 70 FLY

GALLERY



Salon

TOUCH ADRIATIC

PANTA REI - MONACHUS 70 FLY

GALLERY



Salon

TOUCH ADRIATIC

PANTA REI - MONACHUS 70 FLY

GALLERY



Master cabin

TOUCH ADRIATIC

PANTA REI - MONACHUS 70 FLY

GALLERY



Master cabin view

TOUCH ADRIATIC

PANTA REI - MONACHUS 70 FLY

GALLERY



Master cabin bathroom

TOUCH ADRIATIC

PANTA REI - MONACHUS 70 FLY

GALLERY



VIP cabin

TOUCH ADRIATIC

PANTA REI - MONACHUS 70 FLY

GALLERY



Twin cabin

TOUCH ADRIATIC

PANTA REI - MONACHUS 70 FLY

TEHNICAL SPECIFICATIONS

LOA
21.10 m (69' 3")

BEAM
5.85 m (19' 2")

DRAFT
1.3 m (4' 5")

GUESTS
8

CABINS
4

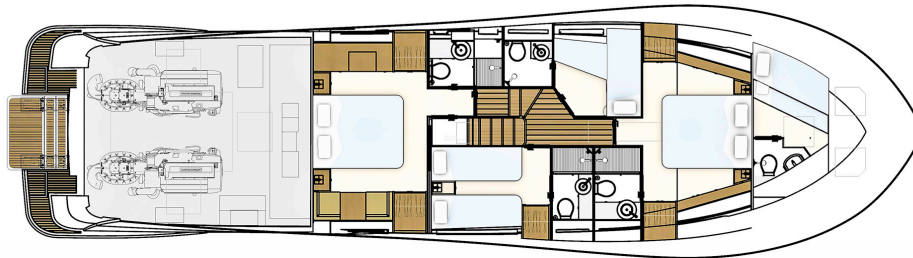
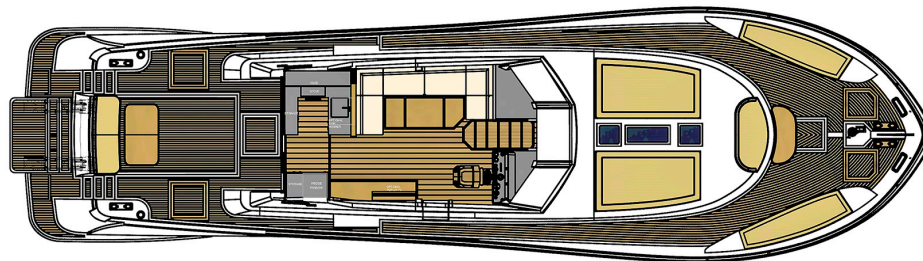
CABIN CONFIGURATION
2 Double Cabins,
2 Twin Cabins (1 starboard
side Twin cabin can be
converted into double bed)

BED CONFIGURATION
2 King Beds,
4 Single Beds

ENGINES
VOLVO PENTA IPS 1200,
PAGURO 18000

CRUISING SPEED
24 knots

FUEL CONSUMPTION
240 Litres/Hr (cruising), 240



PANTA REI - MONACHUS 70 FLY

TENDER & SEA TOYS / EQUIPMENT

- > Tender AerMarine with outboard engine 20 HP
 - > e-Foil SiFly Rider+ (130) QM Extra set
- > 2x Sublue Underwater Scooter Navbow
 - > 2x SUP (stand up paddle board)
 - > Donut for 2 persons
 - > Mask and fins
 - > Basic fishing gear
 - > 2 yoga mats
- > Air conditioning
- > WiFi connection



TOUCH ADRIATIC

PANTA REI
MONACHUS 70 FLY



We invite you to
discover fascinating
Croatia with us!

TOUCH ADRIATIC