

TOUCH ADRIATIC

www.touchadriatic.com



SEA LADY

M/Y

SEA LADY ~ M/Y



Loa **26.40 m (86'7")** Beam **6.28 m (20'7")** Draft **3.11 m (11'2")** Built **2006** Refit **2024** Guests **9** Crew **3** Cabin **4**
Shipyard **Dalla Pieta** Cruising speed **25 knots** Maximum speed **35 knots**

SEA LADY ~ M/Y



1

**Family friendly
and fast yacht**

2

**Mint
conditions**

3

**Attractive
design**

OVERVIEW

SEA LADY is a stunning 26.40-meter luxury motor yacht built by the prestigious Italian shipyard Dalla Pieta. Refitted in 2024, she boasts a fresh and elegant design, offering guests a luxurious experience. With a sleek, enclosed hardtop, modern lines, and interiors featuring warm beige tones and wood finishes, SEA LADY combines comfort and performance. The yacht accommodates up to 9 guests in 4 beautifully designed cabins—1 Master, 1VIP, and 2 Twin cabins, each with ensuite bathrooms. Outdoor spaces include sun pads on the bow, a large aft sun pad, and a dining area, perfect for relaxation or al fresco meals. A spacious swimming platform is available for water sports. Inside, SEA LADY offers bright and airy living spaces, ensuring a relaxed atmosphere. She is available for charter in Croatia, with Trogir as her homeport. With a crew of 3, SEA LADY promises a first-class yachting experience.

SEA LADY ~ M/Y



Portside view

SEA LADY ~ M/Y



Deck seating area

SEA LADY ~ M/Y



Lounge area

SEA LADY ~ M/Y



Salon entrance

SEA LADY ~ M/Y



Salon and deck view

SEA LADY ~ M/Y



Salon full view

SEA LADY ~ M/Y



Galley

SEA LADY ~ M/Y



Master cabin

SEA LADY ~ M/Y



Master cabin

SEA LADY ~ M/Y



Master cabin

SEA LADY ~ M/Y



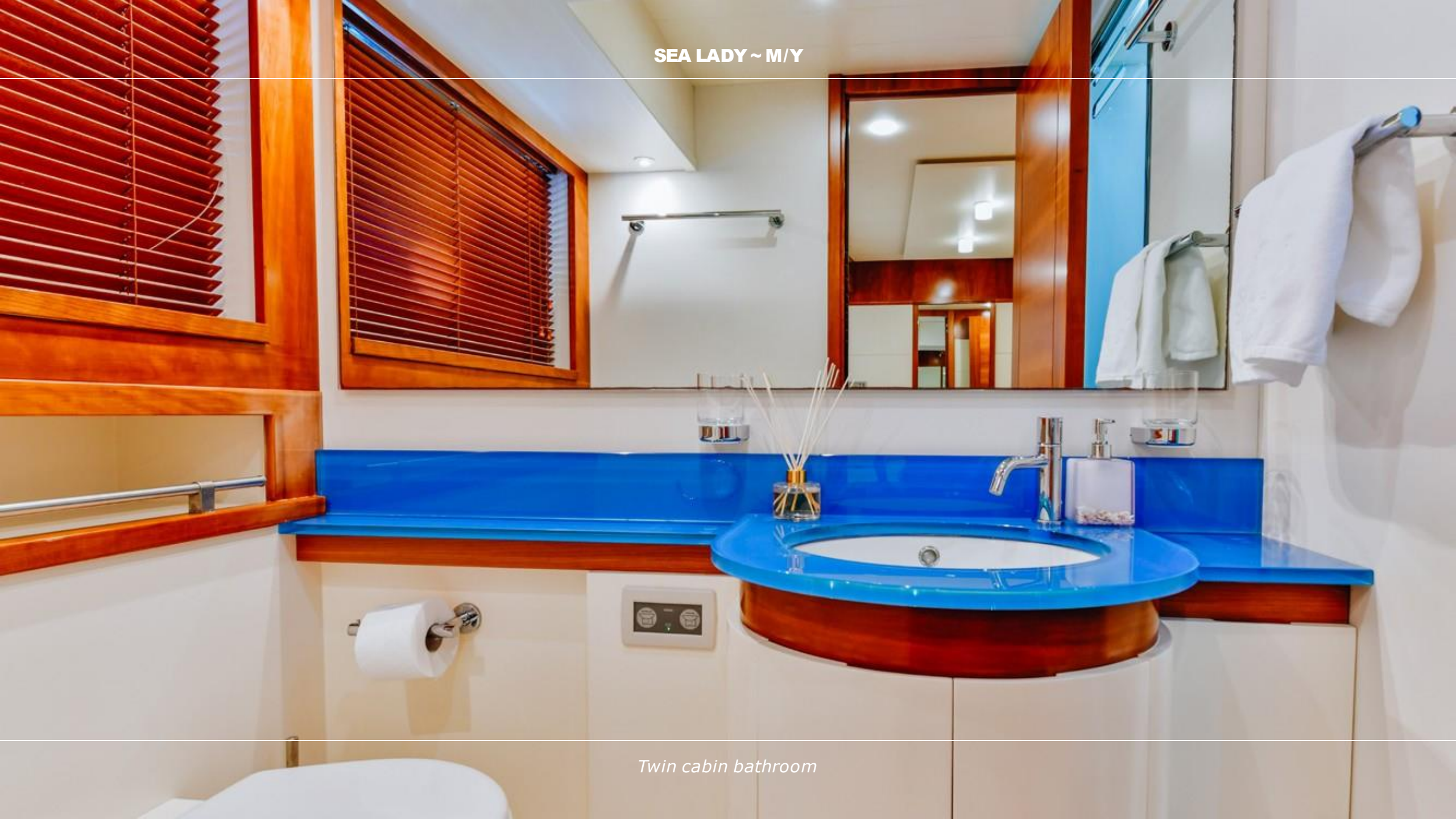
Master cabin bathroom

SEA LADY ~ M/Y



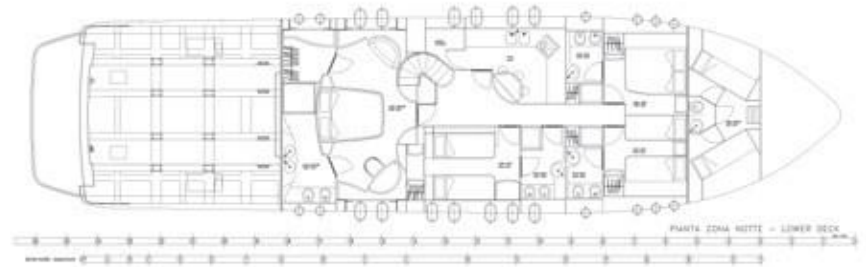
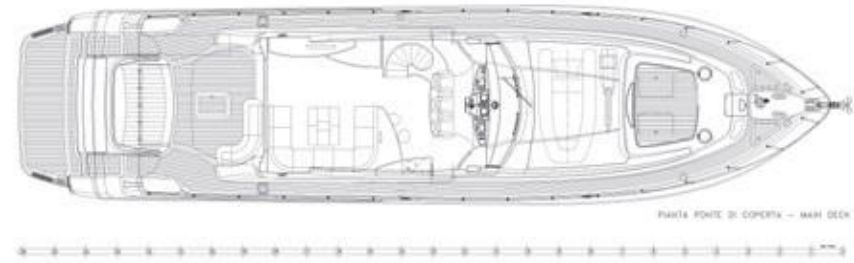
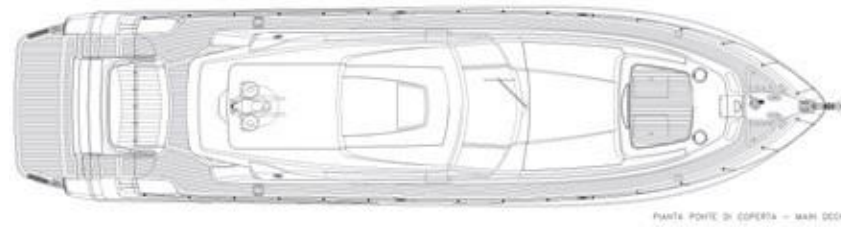
Twin cabin

SEA LADY ~ M/Y



Twin cabin bathroom

SEA LADY ~ M/Y



General arrangement

TECHNICAL SPECIFICATIONS

Length overall (LOA) **26.40 m (86'7")**

Beam **6.28 m (20'7")**

Draft **3.11m (11' 2")**

Built **2006**

Refit **2024**

Naval Architect **Dalla Pieta in-house**

Flag **Croatia**

Hull Construction

GRP Engines **2 x MTU 16V2000M92**

Generators **2 x Kohler 17kw**

Cruising Speed **25 knots**

Maximum Speed **35 knots**

Fuel Consumption **500 l/hours**

Number of Guests cruising **9**

Number of Guests sleeping **9**

Number of Cabins **4**

Cabin Configuration **2 Double, 2 Twin**

Bed Configuration **1King, 1Queen, 4 single and 1Pullman**

Equipment **Air conditioning**

TV in saloon and all cabins

WiFi connection

TENDER & SEA TOYS

Jet tender Williams Sportjet 345 ◊ 1 x Sea bob ◊ 1x SUP ◊ Large floating mattresses ◊ Tube and ring ◊ Snorkelling gear ◊ Fishing gear



SEA LADY ~ M/Y



We invite you to discover fascinating Croatia with us!